

# ASCÉNCE<sup>®</sup>

INTERNATIONAL

Advanced  
Brightening Essence

BRIGHTENING ESSENCE  
ADVANCED



ASCÉNCE®  
INTERNATIONAL

# Product Description

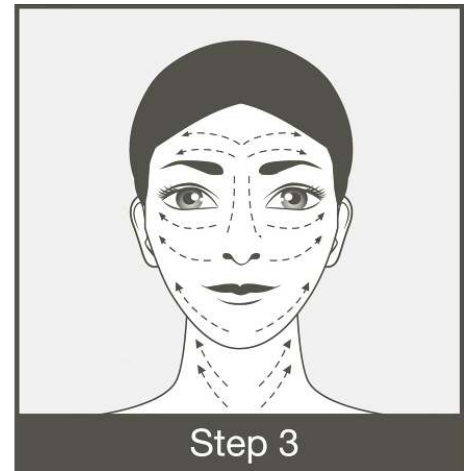
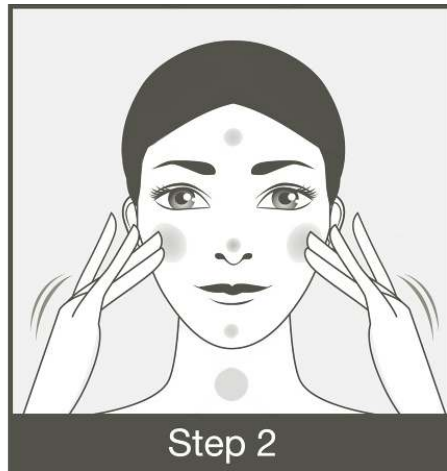
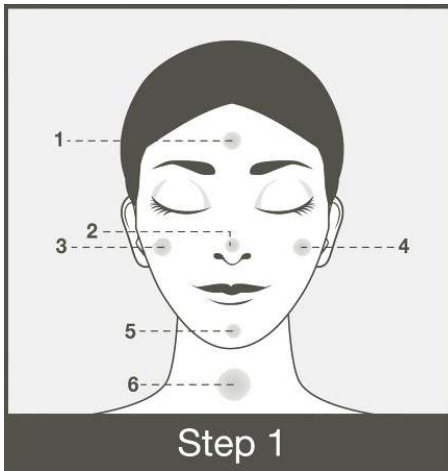
**Advanced Brightening Essence**  
consists of high concentrated

Biosaccharide gum-1, Trehalose and Hyaluronic acid which helps to soothes and calm irritated skin, protects against environmental stress factors.

It also hydrates deeply with long-lasting effect as well as firms your skin.

Besides, its multi natural extracts helps to rejuvenate and revitalize your skin, leaving your skin supple and radiance.





## Direction of Use

- > Apply twice a day, preferably at bedtime after cleansing and toning.
- > Use a light circular motion, apply evenly to face, neck and forehead.



# Active Ingredients

## **Biosaccharide Gum -1**

- Soothing and sensory moisturiser.
- Decreasing skin reactivity for sensitive skin.
- Increasing cellular longevity ;  
for antiaging applications.
- Hydration and sensory.

# Mangosteen Xanthenes

- Xanthenes isolated from the pericarp has skin lightening agent to treat hyperpigmentation disorders due to its ability to act as tyrosinase inhibitor, where it can inhibit enzyme tyrosinase activity in melanogenesis pathway.





## **Camellia Sinensis Leaf Extract**

- Green tea extract is used for treating dry skin, acne, allergic dermatitis and oral diseases.
- Green tea extract increase antioxidants in the skin cells thus reduces free radical damage to the skin



- Green tea extract alleviate inflammation.
- Green tea extract active ingredient have real effect for anti-wrinkle treatments.
- Green tea extract is safe for children and sensitive skin types



# Vitis vinifera (Grape) Seed Extract

- Grape seed extract is one of the most powerful antioxidants that fight free radicals.
- Grape seed extract provide superior antioxidant defense and anti-aging properties to preserve youthful skin texture and tone.
- Grape seed extract alleviate inflammation.
- Grape seed extract is safe for children and sensitive skin types.





## **Hyaluronic Acid**

- Used as a powerful humectant.
- GAG (or Glycoaminoglycan)
- Helps retain moisture levels in the tissue

# Trehalose

- Trehalose is a naturally occurring saccharide present in a wide variety of plant and animal life, enabling survival in the hardest climatic conditions.
- The presence of trehalose in plants is one of the reasons why a barren desert blooms after a rain.
- Trehalose protects skin fibroblasts from dehydration because it replaces water in tissues helping to retain the natural structure of skin and hair.





- Trehalose is an effective moisturiser offering protection from potentially damaging climatic conditions.
- Trehalose replaces water in tissue and reduces the damage from dryness, heat and cold – retaining the natural structure of the skin and hair

## **Glycyrrhiza Glabra Root Extract.**

- Extracted from the Licorice plant, it inhibits melanin biosynthesis while scavenging free radicals.
- Rich in polyphenols that act as antioxidants



# Rosmarinus Officinalis Leaf Extract

- Extracted from the plant *Rosmarinus officinalis*.
- Used for its purifying, cleansing and antiseptic.





## **Chamomilla Recutita Flower Extract**

- Skin smoothing  
and antiinflammatory

## Centella Asiatica Extract

- Extracted from the leaves or roots of *Hydrocotyl asiatica*, listed in Indian Ayurvedic medicine to combat excessively dry skin.
- Particularly suited for fragile skin around the eyes and is used for antiinflammation.





# **Scutellaria Baicalensis Root Extract**

• It has anti-oxidant and antiinflammatory effects.





## **Polygonum Cuspidatum Root Extract**

- It has anti-oxidant and antiinflammatory effects

ASCÉNCE<sup>®</sup>  
INTERNATIONAL

*Thank You For Your  
Kind Attention*